

LICENSED TO:
BUTCH BROTHERS, LTD.



G ASSOCIATES, INC.
1000 W. 10th St.
Suite 100
Oklahoma City, OK 73106
(405) 233-1111

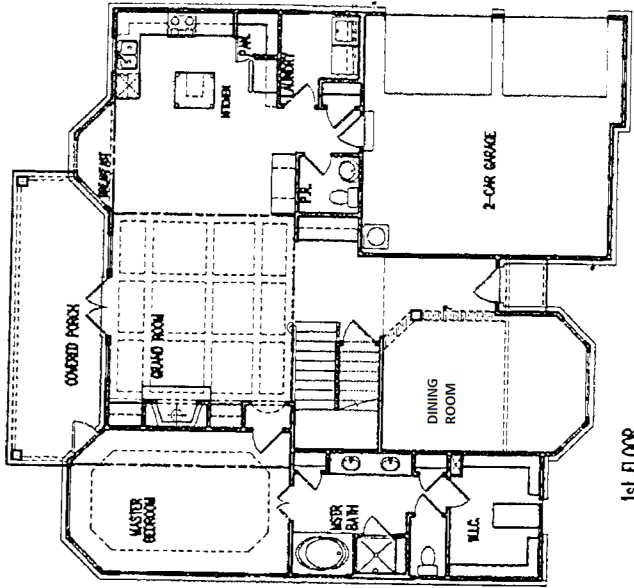
ABBEYWOOD MANOR
ELECTRICAL PLANS

DATE	NO.

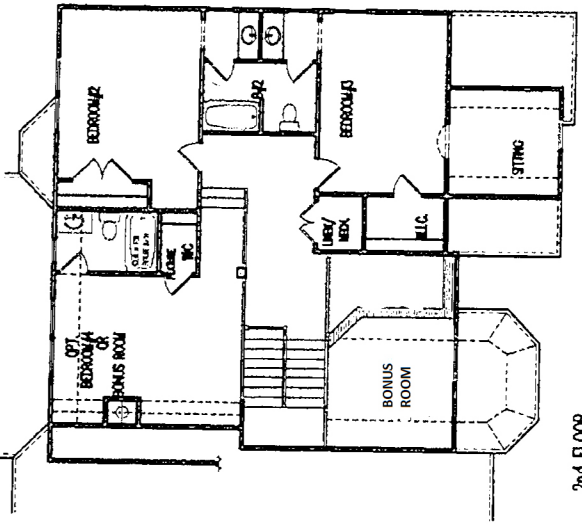
DATE: 11/11/11

05409

111



SEE THE 6th FLOOR PLAN FOR THE
LOCATION OF THE STAIRS AND
ELEVATOR.



SEE THE 6th FLOOR PLAN FOR THE
LOCATION OF THE STAIRS AND
ELEVATOR.

GENERAL NOTES:
1. ALL WORK SHALL BE IN ACCORDANCE WITH THE 2011 INTERNATIONAL RESIDENTIAL CODE BOOK (IRC) AND THE 2011 INTERNATIONAL ELECTRICAL CODE (IEC).
2. ALL ELECTRICAL WORK SHALL BE INSTALLED IN ACCORDANCE WITH THE 2011 IEC.
3. ALL ELECTRICAL WORK SHALL BE INSTALLED IN ACCORDANCE WITH THE 2011 IRC.
4. ALL ELECTRICAL WORK SHALL BE INSTALLED IN ACCORDANCE WITH THE 2011 IBC.
5. ALL ELECTRICAL WORK SHALL BE INSTALLED IN ACCORDANCE WITH THE 2011 IFC.
6. ALL ELECTRICAL WORK SHALL BE INSTALLED IN ACCORDANCE WITH THE 2011 IFB.
7. ALL ELECTRICAL WORK SHALL BE INSTALLED IN ACCORDANCE WITH THE 2011 IFD.
8. ALL ELECTRICAL WORK SHALL BE INSTALLED IN ACCORDANCE WITH THE 2011 IFE.
9. ALL ELECTRICAL WORK SHALL BE INSTALLED IN ACCORDANCE WITH THE 2011 IFF.
10. ALL ELECTRICAL WORK SHALL BE INSTALLED IN ACCORDANCE WITH THE 2011 IFG.
11. ALL ELECTRICAL WORK SHALL BE INSTALLED IN ACCORDANCE WITH THE 2011 IFH.
12. ALL ELECTRICAL WORK SHALL BE INSTALLED IN ACCORDANCE WITH THE 2011 IFI.
13. ALL ELECTRICAL WORK SHALL BE INSTALLED IN ACCORDANCE WITH THE 2011 IFJ.
14. ALL ELECTRICAL WORK SHALL BE INSTALLED IN ACCORDANCE WITH THE 2011 IFK.
15. ALL ELECTRICAL WORK SHALL BE INSTALLED IN ACCORDANCE WITH THE 2011 IFL.
16. ALL ELECTRICAL WORK SHALL BE INSTALLED IN ACCORDANCE WITH THE 2011 IFM.
17. ALL ELECTRICAL WORK SHALL BE INSTALLED IN ACCORDANCE WITH THE 2011 IFN.
18. ALL ELECTRICAL WORK SHALL BE INSTALLED IN ACCORDANCE WITH THE 2011 IFO.
19. ALL ELECTRICAL WORK SHALL BE INSTALLED IN ACCORDANCE WITH THE 2011 IFP.
20. ALL ELECTRICAL WORK SHALL BE INSTALLED IN ACCORDANCE WITH THE 2011 IFQ.
21. ALL ELECTRICAL WORK SHALL BE INSTALLED IN ACCORDANCE WITH THE 2011 IFR.
22. ALL ELECTRICAL WORK SHALL BE INSTALLED IN ACCORDANCE WITH THE 2011 IFS.
23. ALL ELECTRICAL WORK SHALL BE INSTALLED IN ACCORDANCE WITH THE 2011 IFT.
24. ALL ELECTRICAL WORK SHALL BE INSTALLED IN ACCORDANCE WITH THE 2011 IFU.
25. ALL ELECTRICAL WORK SHALL BE INSTALLED IN ACCORDANCE WITH THE 2011 IFV.
26. ALL ELECTRICAL WORK SHALL BE INSTALLED IN ACCORDANCE WITH THE 2011 IFW.
27. ALL ELECTRICAL WORK SHALL BE INSTALLED IN ACCORDANCE WITH THE 2011 IFX.
28. ALL ELECTRICAL WORK SHALL BE INSTALLED IN ACCORDANCE WITH THE 2011 IFY.
29. ALL ELECTRICAL WORK SHALL BE INSTALLED IN ACCORDANCE WITH THE 2011 IFZ.
30. ALL ELECTRICAL WORK SHALL BE INSTALLED IN ACCORDANCE WITH THE 2011 IFA.